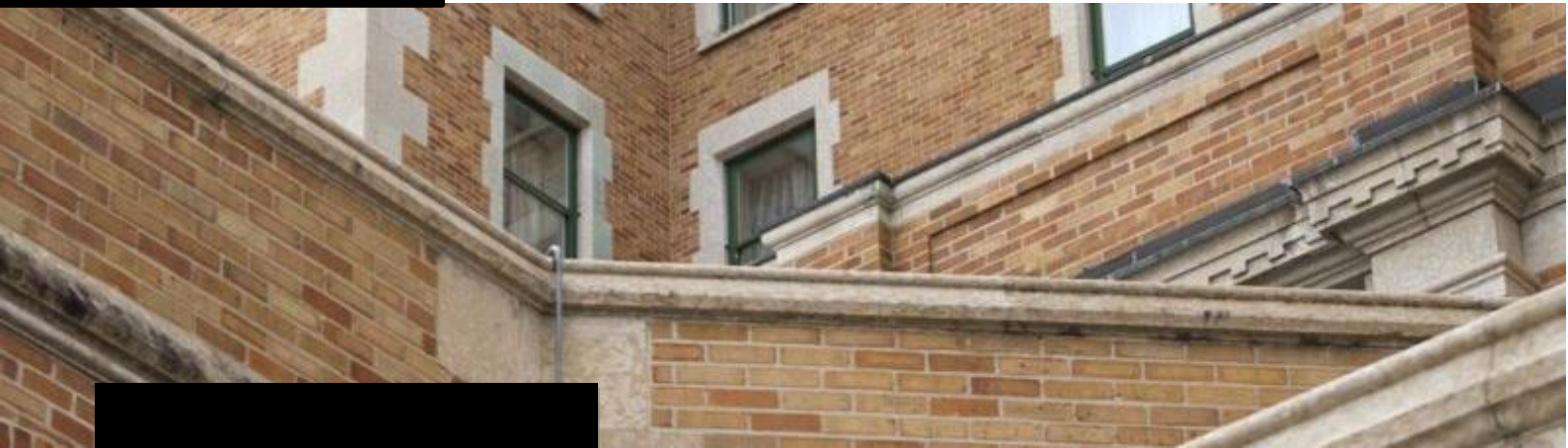


# LISOTOP 600

## Waterproofing



The green power  
for your surface

### CHARACTERISTICS

LisoTop 600 is the perfect waterproofing product for concrete, brick, marble and stone.

- UV-resistant
- Pollution-resistant

### PRODUCT DESCRIPTION

LisoTop 600 is a high-performance, water-based emulsion designed to impart superior waterproofing to all interior and exterior masonry (brick, natural stone) and concrete surfaces.

LisoTop 600 is non-toxic, odorless, water-based, non-flammable and easy to use.

LisoTop 600 reduces both freeze-thaw scaling and efflorescence, extending the life of the substrate.

LisoTop 600 is easy to apply.

#### LisoChem SRL

Rue de Le Mesnil, 34  
5670 Viroinval  
(Belgium)  
Phone: +32 60 490 190  
Mobile: +32 483 367 323  
[www.lisochem.com](http://www.lisochem.com)  
[info@lisochem.com](mailto:info@lisochem.com)

#### Manufacture & Office

Rue des Mousquetaires Gris  
35 ZI de Mariembourg  
5660 Belgium  
Phone: +32 60 490 190  
Mobile: + 32 483 367 323

# LISOTOP 600

## Waterproofing

*The Green Power for your surface*

### BENEFITS

LisoTop 600 :

- Is a colorless, waterproofing treatment for all interior and exterior concrete and masonry surfaces.
- Is a new, exclusive water-based product.

### USE

LisoTop 600 can be used on absorbent substrates such as concrete, brick and masonry.

### SECURITY

Please refer to the safety data sheet :

- Keep out of reach of children
- Protect from freezing
- Wear gloves and safety glasses
- Cover all metal and glass parts before application

### PROPERTIES

- Transparent or slightly yellowish liquid
- Odorless
- Density : 1,02
- pH : 12
- Boiling point : 100°C
- Shelf life: 1 year in original closed packaging

# LISOTOP 600

## Waterproofing

*The Green Power for your surface*

### PREPARATION, APPLICATION, MAINTENANCE

#### General notes :

- Never apply in frost or rain. Always test on the substrate in an inconspicuous place.
- Never dilute or add other products or liquids to the base product. It is very important to mix the product thoroughly before and during use.

#### Preparation and application :

Always test on the substrate in an inconspicuous place.

- LisoTop 550 should be applied using a low-pressure sprayer, airless, roller or brush.
- Apply 1 liter of product for 5 to 10 m<sup>2</sup>. Yield varies according to surface porosity.
- Apply a first coat and, before drying, a second coat.
- Never leave an excess of product; wipe with a clean cloth before drying.
- For vertical surfaces, always apply the product from bottom to top.
- Maximum protection is achieved 3 to 6 days after treatment.

Please read the application system.

Care : Clean all equipment with water.

### PACKAGING

Bucket .....20L

IBC.....1000L

Lisochem S.R.L. Tous droits réservés.  
Date de révision : 15-05-2024