

LISO FLOOR 1000

Additive Stains Pigments for Concrete Floor



The green power
for your concrete

CHARACTERISTICS

Very microscopic pigments to penetrate the concrete, UV Stable pigments, this color floor must be protected by our LisoFloor 4000, Excellent waterproofing of the surface. Produced in aqueous solution, without any solvent and with a very low VOC emission rate

PRODUCT DESCRIPTION

LisoFloor 1000 is a new generation color pigment. Very good pigment penetration and excellent UV resistance. Very easy to use and will save you a lot of time.

Very easy to use and will save you a lot of time. This pigment mixed with our floor hardener, LisoFloor 900, will give you an increase in surface hardness between 12 and 18%, good waterproofing resistance and a dustfree surface.

This easy-to-use water-based solution complies with VOC standards worldwide.

LisoChem SRL

Rue de Le Mesnil, 34
5670 Viroinval (Belgium)
Phone: +32 60 490 190
Mobile: +32 483 367 323
www.lisochem.com
info@lisochem.com

Manufacture & Office

Rue des Mousquetaires Gris 35
ZI de Mariembourg
5660 Belgium
Phone: +32 60 490 190
Mobile: + 32 483 367 323

LISO FLOOR 1000

Additive Stains Pigments for Concrete Floor

The Green Power for your Concrete

CHARACTERISTICS

LisoFloor 1000

- Latest generation of pigments
- Both hardener and colorant that once mixed will penetrate the concrete mass.
- Abrasion resistant, UV and dust resistant.
- Good waterproofing of the surface.
- Product in aqueous solution, without any solvent and having a rate of emission of COV. Very low.

PRODUCT DESCRIPTION

LisoFloor 1000 is a new generation color pigment. Excellent penetration and excellent UV resistance.

Very easy to use and will save you a lot of time.

This pigment mixed with our floor hardener, LisoFloor 900, will give you an increase in surface hardness between 12 and 18%, good waterproofing resistance and a dust-free surface. This easy-to-use water-based solution complies with VOC standards worldwide.

This Stain color can be use on new or old concrete floors. Simple to apply after a good preparation of the surface. To protect this beautiful color, 2 coats of LisoFloor 4000 are required.

USES

New or Old Concrete

For any traffic.

Factories Shed, Storage, Warehouses, Distribution Centers, Food Plants, Textiles, Pharmaceuticals, Electronics, Chemicals. Refrigerated warehouses, bottling plants, Aeronautic and automotive warehouses, etc. Buildings: Health Centers and Hospitals, Offices, Restaurant Cafeterias, Penitentiary Institutions, Stores and Shopping Centers, Schools, University Stadiums, Veterinary Clinics, Common Areas, Aisles and Corridors, Sanitized Environments, Kitchens, Laboratories.

SECURITY

For more information, please refer to the safety data sheet, however:

- » Keep out of reach of children
- » Protect from frost
- » Wear gloves and safety glasses
- » Cover all metal and glass parts before application

LISO FLOOR 1000

Additive Stains Pigments for Concrete Floor

The Green Power for your Concrete

PREPARATION, APPLICATION, MAINTENANCE

General remarks

- Never apply in freezing or rainy weather. Each time make a test on the support in an inconspicuous place. It is very important to thoroughly mix LisoFloor products before and during use.

Preparation of your colorant

- From your solution of LisoFloor 900 take 20L of this solution, add 1 to 3% of LisoFloor 1000, mix the whole imperatively and regularly during the application. We propose 6 pigments, but you can also mix different pigments together to create your own color!

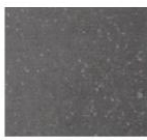
With this system, you can create your own color.

In our application system, you will also find a table so that you can create standard colors, such as a light gray, a charcoal gray or a brown or another color.

Pure Pigments



WHITE



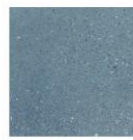
BLACK



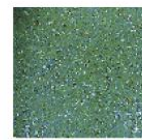
RED



YELLOW



BLUE



GREEN

Application

Spray your surface. Please use enough of the mixed product to make only one operation.

Please make small surfaces and before drying, spread the color with a mono brush and a white pad.

Let dry and once the surface is dry, make a passage with a white pad gloss. (Minimum after 3/4H) - Your surface will become satin.

If you want a polished surface, pass the floor with a single brush equipped with a diamond pad.

If you want a higher resistance, apply 2 coats of LisoFloor 4000.

For more details see our application system